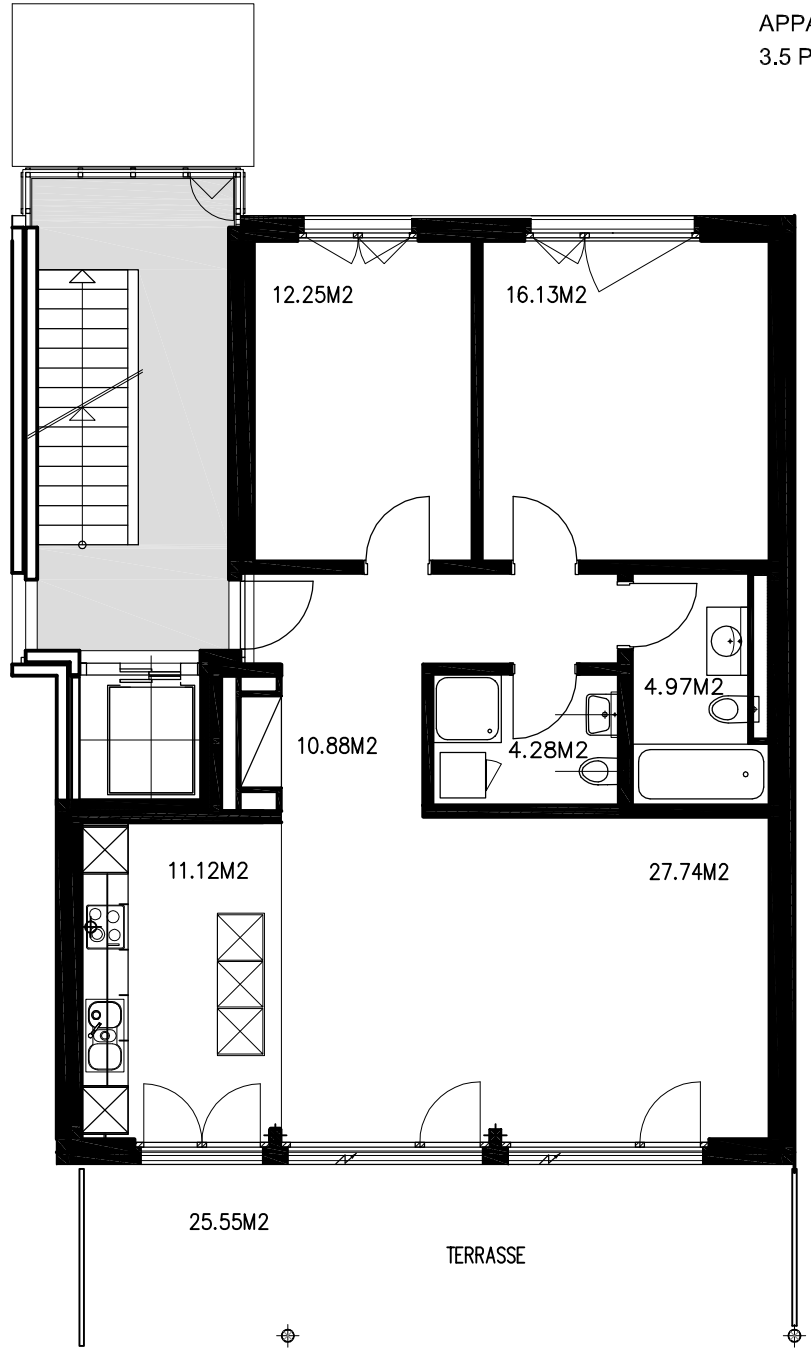


DOSSIER N°17502
 FERME 14
 ESTAVAYER-LE-LAC
 APPARTEMENT N°17502.00.011
 3.5 PIECES - 1 ER ETAGE

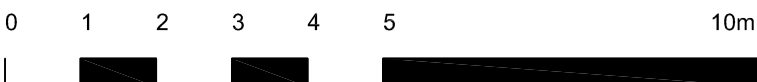
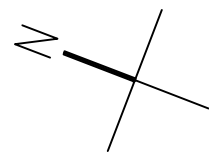


CUISINE	11.12 m2	CHAMBRE 1	12.25 m2
HALL	10.88 m2	CHAMBRE 2	16.13 m2
SALLE DE BAINS	4.97 m2	CHAMBRE 3 SEJOUR	27.74 m2
W.C. DOUCHE, LESS.	4.28 m2	.	.
.	.	.	.

SURFACE APPARTEMENT 87.37 m2

Terrasse 25.55m2

SURFACE TOTALE 112.92 m2



1 centimetre = 1 metre